

## Field Trip Ultraloc®

Type De Produit	<b>Moquette EN Lé</b>	
Numéro Du Style	<b>60497</b>	
Construction	<b>Boucle De Motif</b>	
Fibre	<b>Ecosolution Q® Nylon</b>	
Sous-couche Primaire	<b>Synthétique</b>	
Sous-couche Secondaire	<b>Ultraloc®</b>	
Traitements Protecteurs	<b>SSP® Shaw Protection Du Sol</b>	
Adhésif Recommandé	<b>H1000, H1200 or H3800</b>	
	u.s.	metric
Dimensions Du Produit	<b>12 ft</b>	<b>3.66 m</b>
Jauge	<b>1/8 in</b>	<b>31.5 per 10 cm</b>
Points	<b>7.5 per in</b>	<b>29.5 per 10 cm</b>
Densité Moyenne	<b>9421 oz/yd³</b>	<b>0.349 g/cm³</b>
Kilotex		<b>13.03</b>
Epaisseur Du Velours	<b>0.290 in</b>	<b>7.37 mm</b>
Poids Tufté	<b>28 oz/yd²</b>	<b>949.4 g/m²</b>
Installation Répétition Du Motif	<b>.5 in x 3.19 in</b>	<b>1.27 cm x 8.10 cm</b>



## Méthodes d'Installation Conseillées

Direct Glue, Double Glue, Stretch-In

## Données + Tests Et Essai

Test d'Inflammabilité	<b>Pass</b>
Panneau Rayonnant (Astm E648)	<b>Class I</b>
Nbs Smoke	<b>Less Than 450</b>
Propension Électrostatique	<b>Less Than 3.5 kv</b>
Label Cri Green Label Plus (Glp)	<b>GLP2271</b>
Ada Compliance	<b>&gt;0.6, Meets the recommended static coefficient of friction for ADA walking surfaces and accessible routes***</b>

Test Reports may be included or listed by the manufacturing/inventory style number as opposed to the noted selling style number.

## Garanties

Durée De Vie Commerciale Limitée

## Attributs + Certifications

Certification Cradle to Cradle™ (C2C)

Déclaration environnementale de produit (EPD)

NSF 140

CRI Green Label Plus (GLP)

Label CE (EN 14041)

garantie environnementale

contenu recyclé total

emballage du produit

pays d'origine

**Silver Level (Version 3.1)**

**Certifié Par Un Organisme Tiers Conformément Aux Normes ISO14044, ISO 14025 & EN15804**

or

**GLP2271**

**Certifié Par Un Organisme Tiers**

**Re[turn] Reclamation Program\* | Pickup & Delivery Available**

**<1% (Pre-Consumer <1% | Post-Consumer 0%)**

**100% Recyclable**

**USA**

## Contribution À La Certification Leed

MR Credit: Building Product Disclosure and Optimisation  
Environmental Product Declarations - Option 1: Environmental Product Declaration (EPD)

MR Credit: Building Product Disclosure and Optimisation  
Material Ingredients - Option 1: Material Ingredient Reporting

MR Credit: Building Product Disclosure and Optimisation  
Material Ingredients - Option 2: Material Ingredient Optimization

"Crédit EQ : matériaux faibles émissions  
Option 1 : calculs par catégorie de produit"

**3rd Party Certified in Accordance with ISO14044, ISO14025 & EN15804**

**C2C Silver Level (Version 3.1)**

**C2C Silver Level (Version 3.1)**

**Certified**

## Available Colorways



Monument 97105



Nature Trail 97205



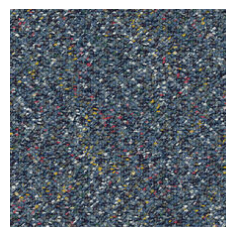
City Hall 97305



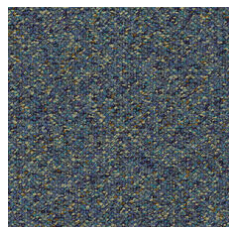
Farm 97310



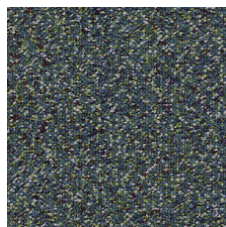
Space Camp 97315



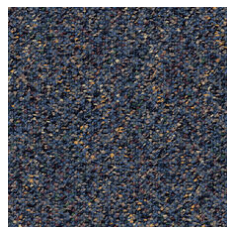
Ballpark 97405



Aquarium 97410



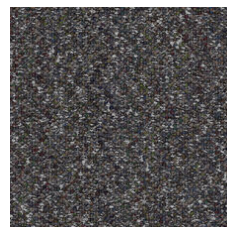
Smithsonian 97415



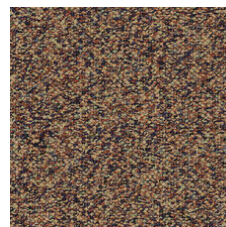
Picnic 97420



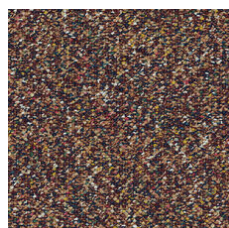
State Capitol 97505



Observatory 97510



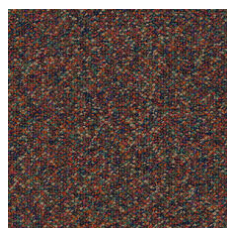
Theatre 97605



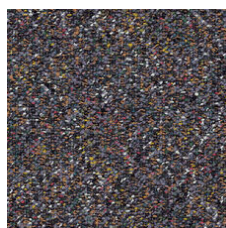
Grand Canyon 97805



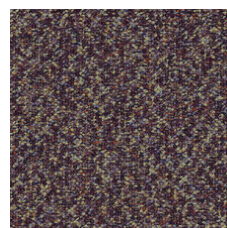
Fire Station 97810



Zoo 97815



Planetarium 97905



Art Museum 97910



Scitech 97915

## Informations Supplémentaires

\* To learn more about the recyclability of our products and our Environmental Guarantee, please visit [shawcontract.com/sustainability](https://shawcontract.com/sustainability).

\*\*Meets or exceeds all local and national regulations in country of manufacture. (Manufactured in an ISO 9001 & ISO 14001 certified facility or equivalent)

\*\*\*This carpet is manufactured to be ADA compliant, but to be fully ADA compliant, the end-user must ensure the carpet is adhered to the floor and installed as outlined in the ADA standards.

[Installation Guidelines](#)

[Maintenance Guidelines](#)

Specifications are subject to nominal manufacturing variance. Material supply and/or manufacturing processes may necessitate changes without notice.

This product is an exclusive design and may not be duplicated in any manner. Use of this design in the creation of another product design is also strictly prohibited.

Visit [shawcontract.com/testing](https://shawcontract.com/testing) for more information.



**PVC-Free**

Corporate Headquarters +1 800 257 7429 | +1 706 532 7984 | Atlanta +1 404 853 7429 | Bengaluru +91 80 6773 0202 | Beijing +86 10 6568 588 | Chicago +1 312 467 1331 | Dubai +971 4 584 6956 | Hong Kong +852 2623 0371 | Latin America (Miami) +1 305 827 5912 | London +44 207 961 4120 | Los Angeles +1 800 233 1614 | Melbourne +61 3 9939 8543 | Mexico City +55 5010 7600 | Mumbai +91 22 6284 5050 | Nantong +86 400 800 7429 | New York +1 212 953 7429 | Paris +33 (0) 1 81 22 44 39 | San Francisco +1 415 955 1920 | Santiago +562 2431 5000 x 550 | São Paulo +55 11 3071 1702 | Shanghai +86 21 3338 4000 | Singapore +65 6733 1811 | Sydney +1 800 556 302